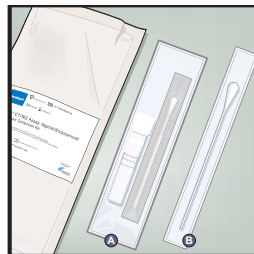


Xpert® CT/NG Endocervical Specimen Collection

1

The Xpert® CT/NG Vaginal/ Endocervical Specimen Collection kit contains

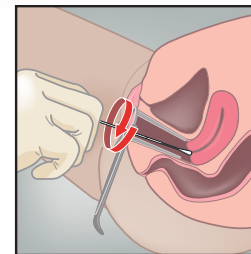
- Ⓐ Individual Collection Kit
- Ⓑ Cleaning Swab



5

Insert the collection swab into the endocervical canal. Rotate the swab clockwise for 10-30 seconds in the endocervical canal.

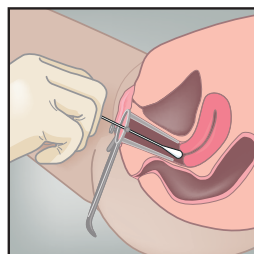
Withdraw the swab carefully.



2

Remove excess mucus from the cervix and surrounding area using the large individually wrapped cleaning swab Ⓑ.

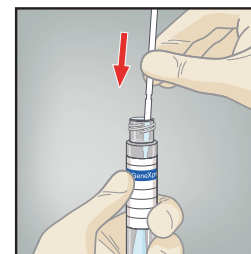
Discard the swab.



6

Unscrew the cap from the transport tube.

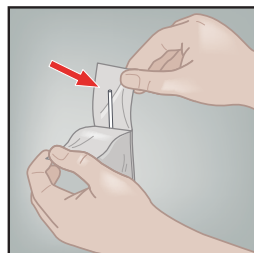
Immediately place the specimen collection swab into the transport reagent tube.



3

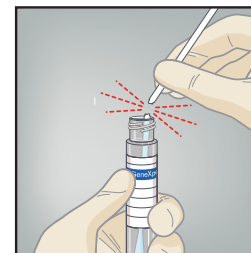
Open package Ⓐ that contains the pink-capped Xpert Swab Transport Reagent tube and individually wrapped collection swab. Set the tube aside before beginning to collect sample.

Open the collection swab wrapper by peeling open the top of the wrapper.



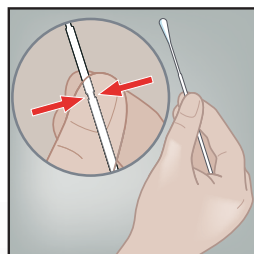
7

Identifying the scoreline, break the swab shaft against the side of the tube. Discard the top portion of the swab shaft.



4

Hold the swab in your hand, placing your thumb and forefinger in the middle of the swab shaft.



8

Re-cap the swab transport reagent tube and tighten the cap securely.

Label the transport tube with the sample identification information, including date of the collection, as required.

